

COPYRIGHT © Hangzhou EZVIZ Software Co., Ltd. ALL RIGHTS RESERVED.

Any and all information, including, among others, wordings, pictures, graphs are the properties of Hangzhou EZVIZ Software Co., Ltd. (hereinafter referred to as "EZVIZ"). This user manual (hereinafter referred to as "the Manual") cannot be reproduced, changed, translated, or distributed, partially or wholly, by any means, without the prior written permission of EZVIZ. Unless otherwise stipulated, EZVIZ does not make any warranties, guarantees or representations, express or implied, regarding to the Manual.


About this Manual

The Manual includes instructions for using and managing the product. Pictures, charts, images and all other information hereinafter are for description and explanation only. The information contained in the Manual is subject to change, without notice, due to firmware updates or other reasons. Please find the latest version in the EZVIZ™ website (<http://www.ezviz.com>).

Revision Record

New release - May, 2026

Trademarks Acknowledgement

EZVIZ™, ™, and other EZVIZ's trademarks and logos are the properties of EZVIZ in various jurisdictions. Other trademarks and logos mentioned below are the properties of their respective owners.

Legal Disclaimer

TO THE MAXIMUM EXTENT PERMITTED BY APPLICABLE LAW, THE PRODUCT DESCRIBED, WITH ITS HARDWARE, SOFTWARE AND FIRMWARE, IS PROVIDED "AS IS", WITH ALL FAULTS AND ERRORS, AND EZVIZ MAKES NO WARRANTIES, EXPRESS OR IMPLIED, INCLUDING WITHOUT LIMITATION, MERCHANTABILITY, SATISFACTORY QUALITY, FITNESS FOR A PARTICULAR PURPOSE, AND NON-INFRINGEMENT OF THIRD PARTY. IN NO EVENT WILL EZVIZ, ITS DIRECTORS, OFFICERS, EMPLOYEES, OR AGENTS BE LIABLE TO YOU FOR ANY SPECIAL, CONSEQUENTIAL, INCIDENTAL, OR INDIRECT DAMAGES, INCLUDING, AMONG OTHERS, DAMAGES FOR LOSS OF BUSINESS PROFITS, BUSINESS INTERRUPTION, OR LOSS OF DATA OR DOCUMENTATION, IN CONNECTION WITH THE USE OF THIS PRODUCT, EVEN IF EZVIZ HAS BEEN ADVISED OF THE POSSIBILITY OF SUCH DAMAGES.

TO THE MAXIMUM EXTENT PERMITTED BY APPLICABLE LAW, IN NO EVENT SHALL EZVIZ'S TOTAL LIABILITY FOR ALL DAMAGES EXCEED THE ORIGINAL PURCHASE PRICE OF THE PRODUCT.

EZVIZ DOES NOT UNDERTAKE ANY LIABILITY FOR PERSONAL INJURY OR PROPERTY DAMAGE AS THE RESULT OF PRODUCT INTERRUPTION OR SERVICE TERMINATION CAUSED BY: A) IMPROPER INSTALLATION OR USAGE OTHER THAN AS REQUESTED; B) THE PROTECTION OF NATIONAL OR PUBLIC INTERESTS; C) FORCE MAJEURE; D) YOURSELF OR THE THIRD PARTY, INCLUDING WITHOUT LIMITATION, USING ANY THIRD PARTY'S PRODUCTS, SOFTWARE, APPLICATIONS, AND AMONG OTHERS.

REGARDING TO THE PRODUCT WITH INTERNET ACCESS, THE USE OF PRODUCT SHALL BE WHOLLY AT YOUR OWN RISKS. EZVIZ SHALL NOT TAKE ANY RESPONSIBILITIES FOR ABNORMAL OPERATION, PRIVACY LEAKAGE OR OTHER DAMAGES RESULTING FROM CYBER ATTACK, HACKER ATTACK, VIRUS INSPECTION, OR OTHER INTERNET SECURITY RISKS; HOWEVER, EZVIZ WILL PROVIDE TIMELY TECHNICAL SUPPORT IF REQUIRED. SURVEILLANCE LAWS AND DATA PROTECTION LAWS VARY BY JURISDICTION. PLEASE CHECK ALL RELEVANT LAWS IN YOUR JURISDICTION BEFORE USING THIS PRODUCT IN ORDER TO ENSURE THAT YOUR USE CONFORMS TO THE APPLICABLE LAW. EZVIZ SHALL NOT BE LIABLE IN THE EVENT THAT THIS PRODUCT IS USED WITH ILLEGITIMATE PURPOSES.

IN THE EVENT OF ANY CONFLICTS BETWEEN THE ABOVE AND THE APPLICABLE LAW, THE LATTER PREVAILS.

Table of Contents

Attention	1
Package Contents	1
Overview	2
1. Camera	2
2. Panel	2
3. Mounting Base	3
Setup	4
Get the EZVIZ App	4
Installation	4
1. Install a microSD™ Card (Optional)	4
2. Install the Peephole	5
Power On	10
Add to EZVIZ App	11
Maintenance	12
1. Charge the Panel	12
2. Restore to Factory Settings	12
View Your Device	13
EZVIZ Connect	15
1. Use Amazon Alexa	15
2. Use Google Assistant	16
Initiatives on the Use of Video Products	17
Appendix	18
1. Rechargeable Lithium Ion Battery	18
2. Safe Battery Removal and Replacement	18
3. Information for Private Households	20

Attention

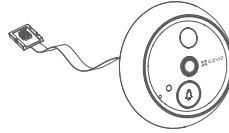


- Do not expose the camera to the harsh environment like high temperature, humid, salt mist or rain, otherwise, the device may be damaged.
- Do not press the sensors or lens of the camera, otherwise, the device may be damaged.
- Do not pull the wire of the camera hard, and protect yourself from being cut by the wire. The warranty does not cover damage to the wire caused by improper use.

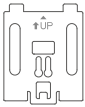
Package Contents



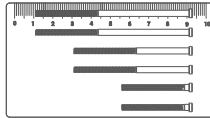
Panel (x1)



Camera (x1)



Mounting Base (x1)



Screws (x6)



Power Cable (x1)



Regulatory Information (x2)



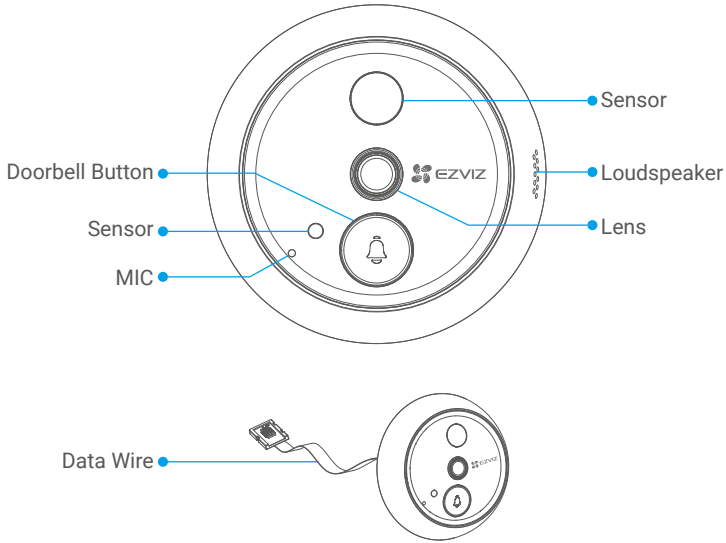
Quick Start Guide (x1)



Video/Audio Monitoring Sticker (x1)

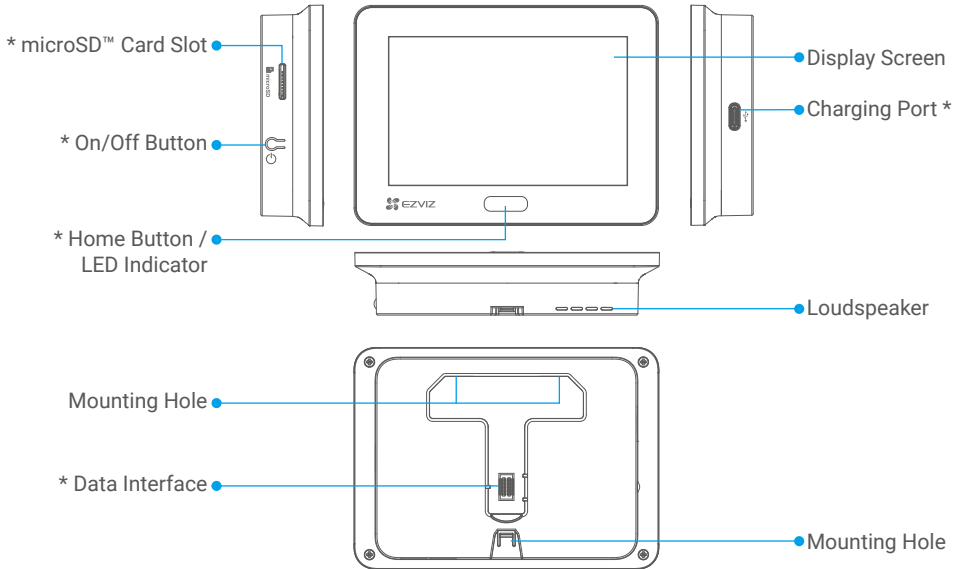
Overview

1. Camera



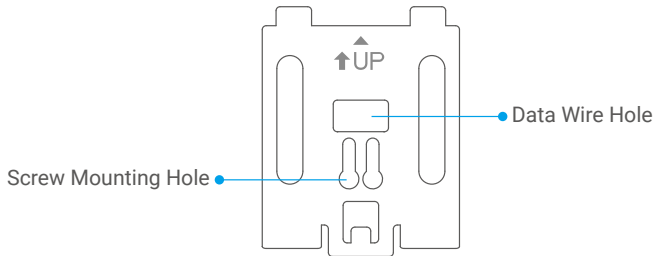
i Do not block the sensors and the lens.

2. Panel



Name	Description
microSD™ Card Slot	Insert a microSD™ card (purchase separately) into this slot. Initialize the card in the EZVIZ app before using it. Recommended compatibility: Class 10, maximum space 512 GB.
On/Off Button	<ul style="list-style-type: none"> • Power on/off: Press and hold for 3 seconds to power on or off the peephole. • Turn on/off live view: When the peephole is powered on, press once to turn on or off the live view. • Operation confirmation: When you operate on the display screen, the button can be used for confirmation.
Home Button	<ul style="list-style-type: none"> • Turn on/off live view: When the peephole is powered on, press once to turn on or off the live view. • Reset: Press and hold for 3 seconds to restart the device and restore factory settings. • Operation confirmation: When you operate on the display screen, the button can be used for confirmation.
LED Indicator	When the doorbell button on the camera is pressed, or when someone is detected outside the door by the camera, the indicator turns on.
Charging Port	Connect it to a power outlet with a power adapter (DC5V 2.5A, purchase separately) to charge the panel.
Data Interface	Connect with the data wire of the camera.

3. Mounting Base



Setup

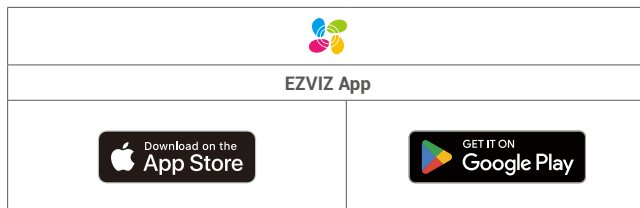
Follow the steps to set your peephole:

1. Get the EZVIZ app, and log in to your EZVIZ account.
2. Install your peephole.
3. Power on your peephole.
4. Add your peephole to your EZVIZ account.

Get the EZVIZ App

- Before downloading the app:
 - If the app is already installed, verify that it is the latest version by checking for updates in your app store.
 - If the app is not installed, follow the steps below to download it.

1. Connect your mobile phone to Wi-Fi (suggested).
2. Download the EZVIZ app by searching "EZVIZ" in the App Store or Google Play™.
3. Register an EZVIZ account and log in to the app.

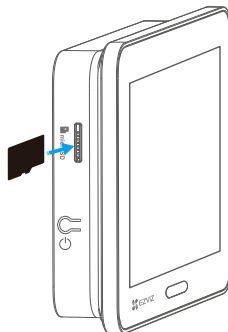


Installation

- It is recommended to fully charge the panel before first-time use. Please refer to "[Charge the Panel](#)".

1. Install a microSD™ Card (Optional)

1. Insert a microSD™ card (purchase separately) into the card slot.






- After installing the microSD™ card, you should initialize the card in the EZVIZ app before using it.

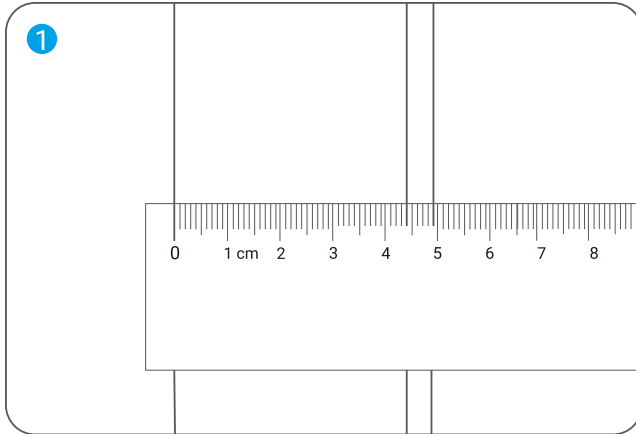
2. In the EZVIZ app, tap "Record List" in the "Device Settings" page to check the card status.
3. If the microSD™ card status shows as "Uninitialized", tap to initialize it. The status will then change to "In Use", allowing videos to be stored.

2. Install the Peephole

If you already have a peephole, install the device in the same place. If not, please drill a hole of diameter about 14 mm (no more than 50 mm) and about 145 cm distance from the ground to have a good viewing effect.

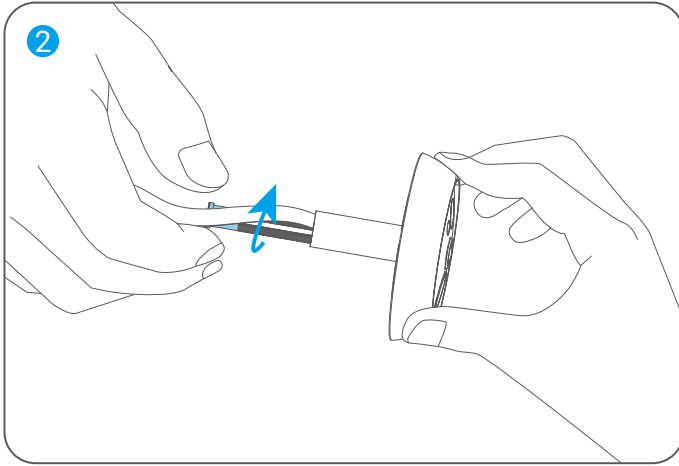
1. Measure the door's thickness and select the appropriate screws. Then drill a hole on the door.

Thickness	Screw
35 mm to 60 mm	
60 mm to 85 mm	
85 mm to 105 mm	

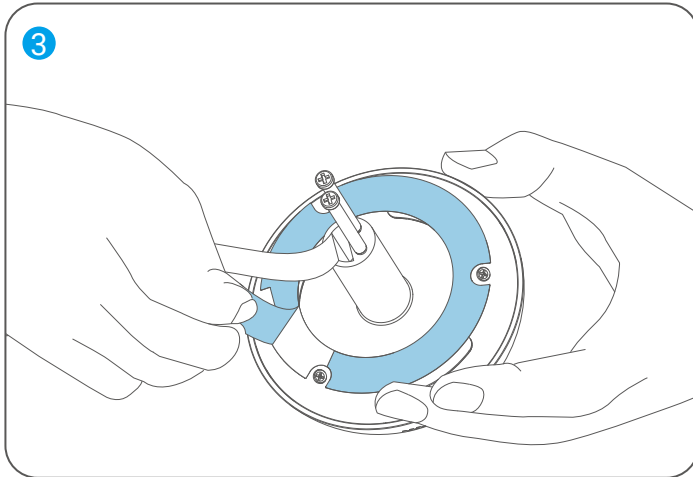


2. Turn the screws into the back of the camera without tightening.

i Just fix it, no tightening required.

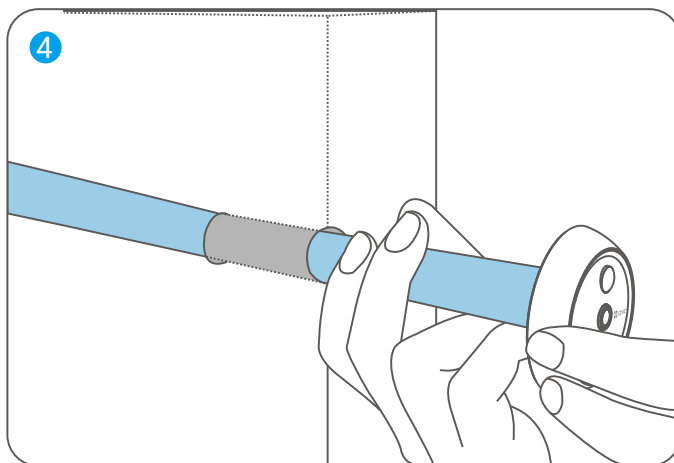


3. Tear off the release paper.

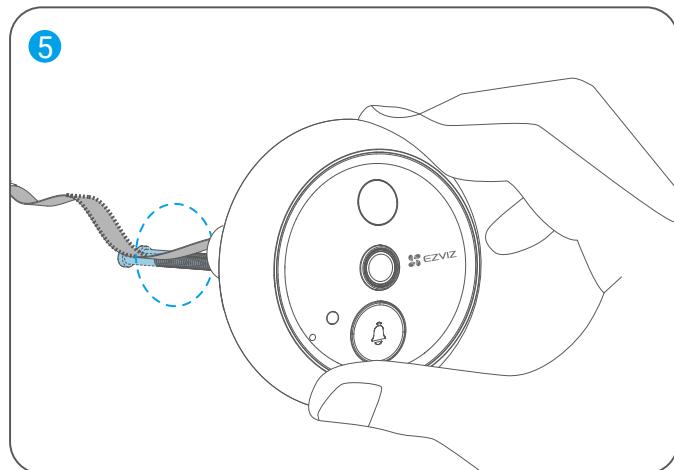


4. Pass the screws and wire through the door hole.

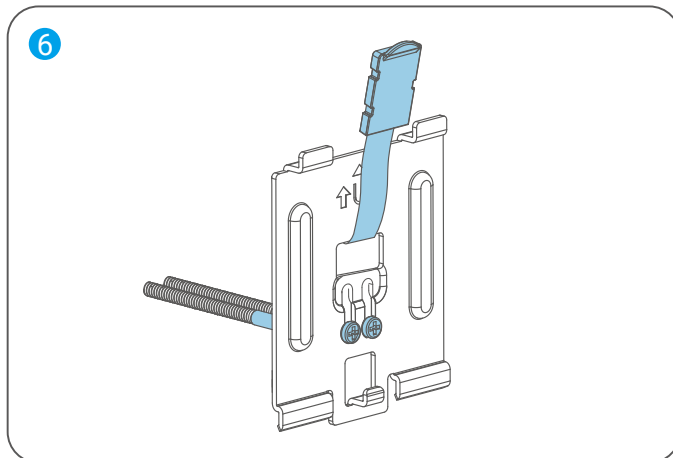
i Wrap them in a paper tube for easier insertion.



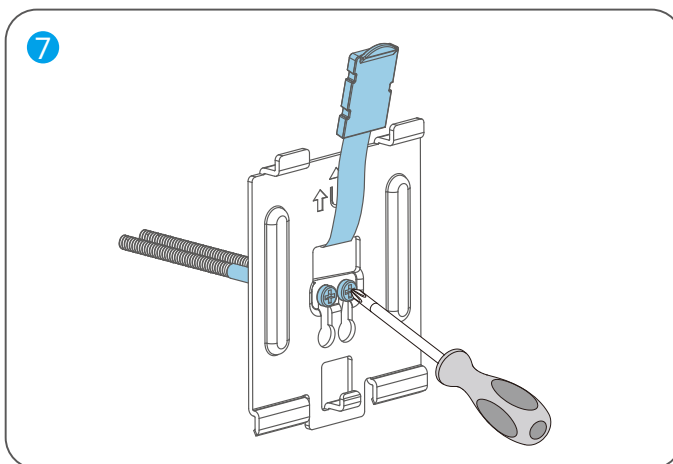
5. Adjust the camera's position so that the doorbell button is located on the lower side and push it close to the door gently.



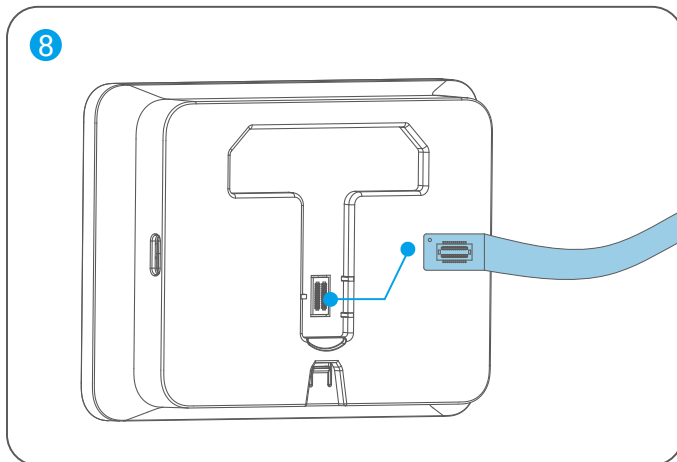
6. Take out the mounting base, and pass the screws and the data wire of the camera through the screw mounting holes of the mounting base.



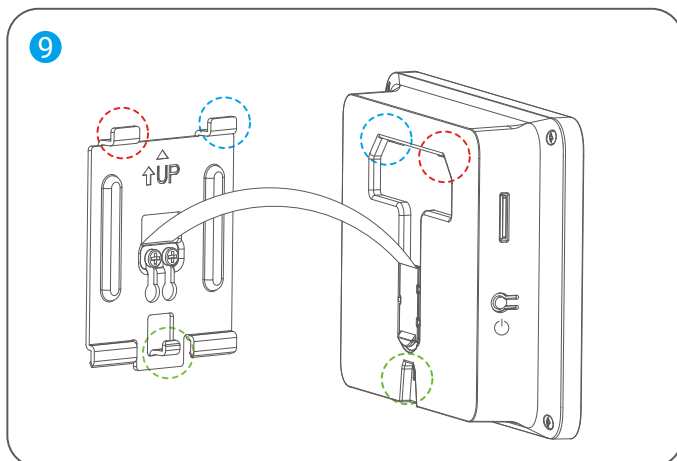
7. Adjust the base's position to make sure the arrow on the base points upward, then tighten the screws.



8. Connect the camera data wire to the data interface on the back of the panel.



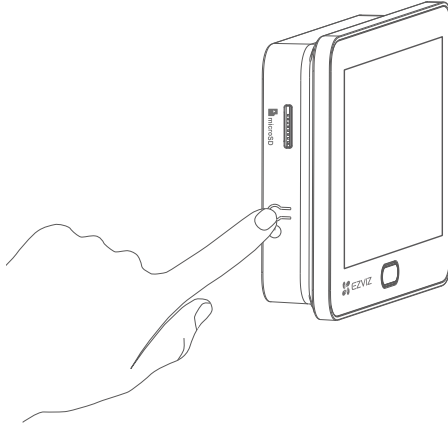
9. Align the base with the mounting holes of the panel and slide the panel downward until you hear a click sound, meaning that the panel is securely seated on the mounting base.



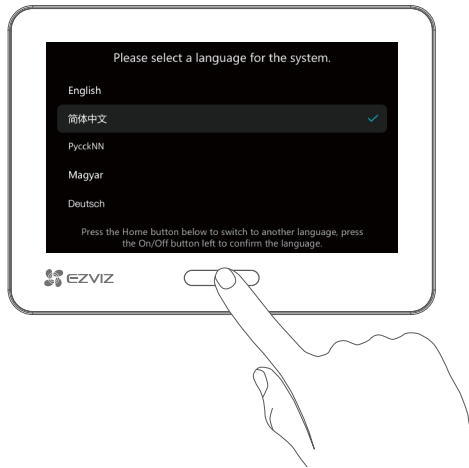
10. After installation, remove all protective films from the camera lens and the panel.

Power On

1. Press and hold the on/off button for 3 seconds to power on the panel.



2. Press the home button to switch between languages. Then press the on/off button the panel to confirm.



Add to EZVIZ App

1. On your smartphone, log in to your EZVIZ account, on the home screen, tap "+" in the upper-right corner to go to the Scan QR Code page.
2. Scan the QR code on the screen of the panel.



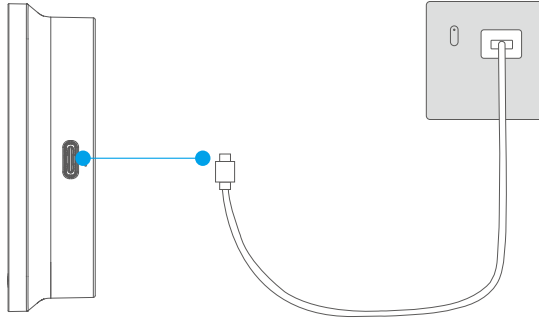
3. Follow the app wizard to finish Wi-Fi configuration and add the panel to your EZVIZ account.

i If you failed to get the QR code or want to reconfigure Wi-Fi, press and hold the home button for 3 seconds to reset and repeat the steps above.

Maintenance

1. Charge the Panel

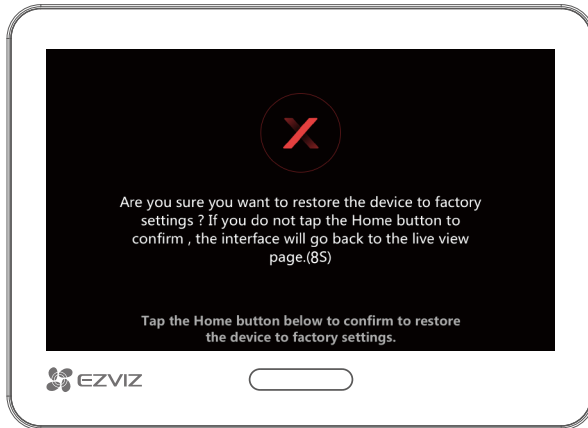
If the panel is out of battery, connect the panel to a power outlet via power adapter (DC5V 2.5A, purchase separately).



- Before charging the panel with a power adapter, remove the panel from the mounting base.
- When charging, the panel will be automatically turned on.
- For disconnection from power supply, unplug the power connector from the panel.
- Do not charge the panel when the environmental temperature exceeds 45 °C or falls below 0 °C.

2. Restore to Factory Settings

Press and hold the home button for 3 seconds until the panel emits a beep sound and the following page is displayed on the screen. Then press the home button once to confirm before the 8-second countdown ends.



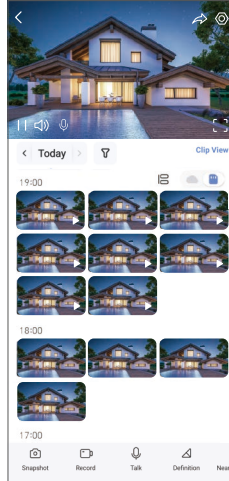
Caution! All settings will be restored to factory settings.

View Your Device

1. Live View

i The app interface may change due to version update.

Launch the EZVIZ app, tap the device card of this peephole to enter the device page. Then tap the Live View button to enter the live view page where you can view and listen to a live feed, take snapshots, record videos, and select a video resolution as needed.



i Swipe left and right across the screen to see more icons.

Icon	Description
	Share. Share your device with anyone you want.
	Settings. View or change the device settings.
	Full Screen Display. Tap to enjoy a full screen display for your field of view.
	Snapshot. Take a snapshot.
	Record. Manually start/stop recording.
	Talk. Tap to talk with the people in front of the camera.
	Definition. Tap to select a video resolution.
	Nearby Device. Tap to select available nearby devices for multi-screen live view.
	PiP (Picture-in-Picture). Tap to watch the video over other apps.
	Tip. Tap to see more information about the device.
	Rearrange. Rearrange the sequence of all the functions above.

2. Settings

In the settings page, you can set the parameters of the device.

Parameter	Description
Name	View or tap to customize the name of your device here.
Battery	You can see the battery remaining capacity here and choose the working mode of your device.
Intelligent Detection	You can enable/disable human shape detection for your device.
Message Notification	You can manage the device message and EZVIZ app notification.
Audio Settings	You can set relevant audio parameters for your device.
Image Settings	You can set relevant image parameters for your device.
Screen Settings	You can set the screen brightness, auto wake-up and auto-lock screen time here.
Light Settings	You can set relevant light parameters for your device.
Record List	You can see the microSD™ card status here.
Visitor Reply	You can enable Auto Reply and add a voice reply. If someone presses the doorbell button and no one responds within the preset time period, the voice reply will be automatically sent.
Privacy Settings	You can encrypt your videos with encryption password and customize the privacy area.
Network Settings	You can see the connection status here.
Device Information	You can see the device information here, including the user guide.
EZVIZ Cloud	You can subscribe and manage the cloud storage.
Share Device	You can share the device to your family members or guests.
Delete Device	Tap to delete the device from EZVIZ app.

1. Use Amazon Alexa

These instructions will enable you to control your EZVIZ devices with Amazon Alexa. If you run into any difficulties during the process, please refer to Troubleshooting.

Before you start, make sure that:

1. EZVIZ devices are connected to the EZVIZ app.
2. In the EZVIZ app, turn off the "Video Encryption" and turn on the "Audio" in the Device Settings page.
3. You have an Alexa-enabled device (i.e Echo Spot, Echo-Show, All-new Echo-Show, Fire TV (all generations), Fire TV stick (second generation only), or Fire TV Edition smart TVs).
4. The Amazon Alexa app is already installed on your smart device, and you have created an account.

To Control EZVIZ devices with Amazon Alexa:

1. Open the Alexa app and select "Skills and Games" from the menu.
2. On the Skills and Games screen, search for "EZVIZ", and you will find "EZVIZ" skills.
3. Select your EZVIZ device's skill, then tap ENABLE TO USE.
4. Enter your EZVIZ username and password, and tap Sign in.
5. Tap the Authorize button to authorize Alexa to access your EZVIZ account, so that Alexa can control your EZVIZ devices.
6. You will see "EZVIZ has been successfully linked", then tap DISCOVER DEVICES to allow Alexa to discover all your EZVIZ devices.
7. Go back to Alexa app menu and select "Devices", and under devices you will see all your EZVIZ devices.

Voice Command

Discover a new smart device via the "Smart Home" menu in the Alexa app or the Alexa Voice Control function. Once the device is found, you can control it with your voice. Speak simple commands to Alexa.

Troubleshooting

What should I do if Alexa fails to discover my device?

Check if there are any Internet connecting problems.

Try to restart the smart device and re-discover the device on Alexa.

Why the device's status is "Offline" on Alexa?

Your device might have been disconnected from the network. Restart the smart device and re-discover on Alexa.

Check if your router is connected to the Internet and try again.

 For details about countries where Amazon Alexa is available, see [Amazon Alexa's official website](#).

2. Use Google Assistant

With the Google Assistant, you can activate your EZVIZ device and watch live by speaking Google Assistant voice commands.

The following devices and apps are required:

1. A functional EZVIZ app.
2. In the EZVIZ app, turn off the "Video Encryption" and turn on the "Audio" in the Device Settings page.
3. A TV with functional Chromecast connecting to it.
4. The Google Assistant app on your phone.

To get started, follow the steps below:

1. Set up the EZVIZ device and make sure it works properly on the app.
2. Download the Google Home app from the App Store or Google Play™ and log into your Google account.
3. On the Myhome screen, tap "+" on the upper-left corner, and select "Set up device" from the menu list to go to the Set up page.
4. Tap Works with Google, and search for "EZVIZ", where you will find "EZVIZ" skills.
5. Enter your EZVIZ username and password, and tap Sign in.
6. Tap the Authorize button to authorize Google to access your EZVIZ account, so that Google can control your EZVIZ devices.
7. Tap Return to app.
8. Follow the above steps to complete the authorization. When synchronization is completed, EZVIZ service will be listed under your list of services. To see a list of compatible devices under your EZVIZ account, tap on the EZVIZ service icon.
9. Now try some commands. Use the name of the camera that you created when you set up the system.

Users can manage devices as a single entity or in a group. Adding devices to a room allows users to control a group of devices at the same time using one command.

See the link for more information:

<https://support.google.com/googlehome/answer/7029485?co=GENIE.Platform%3DAndroid&hl=en>

 For additional information about the device, please refer to www.ezviz.com/eu.

Initiatives on the Use of Video Products

Dear Valued EZVIZ Users,

Technology affects every aspect of our life. As a forward-looking tech company, we are increasingly aware of the role technology plays in improving efficiency and quality of our life. At the same time, we are also aware of the potential harm of its improper usage. For example, video products can record real, complete and clear images, therefore they hold great values in representing facts. Nevertheless, improper distribution, use and/or processing of video records may infringe on the privacy, legitimate rights and interests of others.

Committed to innovating technology for the good, we at EZVIZ hereby earnestly advocate that every user shall use video products properly and responsibly, thus to collectively create a positive environment where all related practices and usage comply with applicable laws and regulations, respect individuals' interests and rights, and promote social morality.

Here are EZVIZ's initiatives that we'd appreciate your attention:

1. Each individual possesses a reasonable expectation of privacy, and the use of video products should not be in conflict with such reasonable expectation. Therefore, a warning notice which clarifies the monitoring range should be displayed in a reasonable and effective manner, when installing video products in public areas. For non-public areas, the rights and interests of people involved shall be evaluated thoughtfully, including but not limited to, installing video products only after obtaining the consent of the stakeholders, and not installing highly-invisible video products without other's knowledge.
2. Video products objectively records footage of real activities within specific time and space. Users shall reasonably identify the people and rights involved in this scope in advance, to avoid any infringement of portrait, privacy or other legal rights of others while protecting themselves through video products. Notably, if you choose to enable the audio recording function on your camera, it will capture sounds, including conversations, within the monitoring range. We highly recommend a comprehensive assessment on the potential sound sources in the monitoring range, so as to fully understand the necessity and the reasonableness before you turn on the audio recording function.
3. Video products in use will consistently generate audio or visual data from real scenes – possibly including biometric information such as facial images – based on the user's selection of product features. Such data can be used or processed to use. Video products are only technological tools that do not and cannot humanly practice legal and moral standards to guide lawful and proper use of data. It is the methods and purposes of the people who control and use the generated data that make a difference. Therefore, data controllers shall not only strictly abide by applicable laws and regulations, but also fully respect non-obligatory rules including international conventions, moral standards, cultural norms, public order and local customs. Furthermore, we should always prioritize the protection of privacy and portrait rights, and other reasonable interests.
4. The video data continuously generated by video products carries the rights, values and other demands of various stakeholders. Thus, it is extremely crucial to ensure data security and shield the products from malicious intrusions. Every user and data controller shall, undertake all reasonable and necessary measures to maximize product and data security, avoiding data leakage, improper disclosure or misuse, including but not limited to, setting up access control, selecting a suitable network environment where video products are connected, establishing and constantly optimizing network security.
5. Video products have made great contributions to enhance the safety of our society, and we believe that they will continue to play a positive role in various aspects of our daily life. Any attempt to abuse these products to violate human rights or engage in unlawful activities contradicts the very essence of the value in tech innovation and product development. We encourage every user to establish your own methods and rules to evaluate and monitor the use of video products, so as to ensure that these products are always used properly, thoughtfully and with goodwill.

Appendix

1. Rechargeable Lithium Ion Battery

The battery type of the device: Portable battery.

Battery model: H765965P

Rated voltage: 3.8 V DC

Rated capacity: 4600 mAh

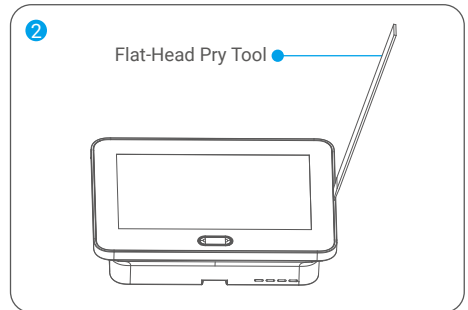
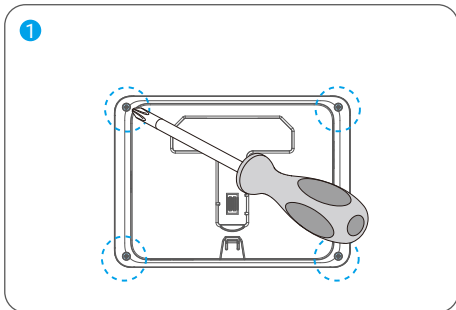
Battery manufacturer: Phenix New Energy (Huizhou) Co., Ltd.

Chemical Composition	Chemical Formula	CAS No.	Weight (%)
Lithium Cobalt Oxide	LiCoO ₂	12190-79-3	47.29%
Nanotubes	CNT	1333-86-4	0.46%
Polyvinylidene fluoride	PVDF	24937-79-9	0.52%
vAluminum Foil	AL	7429-90-5	5.01%
Copper Foil	Cu	7440-50-8	7.35%
Graphite	C	7782-42-5	25.01%
vSuper P	S-P	7782-42-5	0.24%
Styrene Butadiene rubber	SBR	61789-96-6	0.95%
Carboxymethylcellulose Sodium	CMC	9000-11-7	0.40%
Polypropylene	(C ₂ H ₄) _n	9002-88-4	0.30%

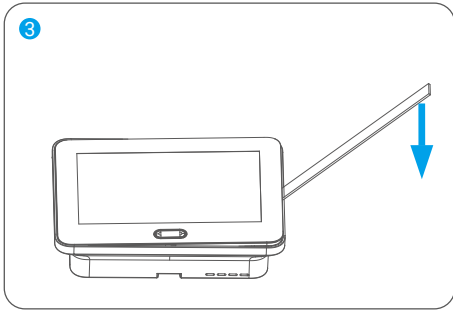
2. Safe Battery Removal and Replacement

- It is recommended to use the same model of battery (refer to "[Rechargeable Lithium Ion Battery](#)") or battery with the same specifications for replacement.
- To install a new battery, follow the steps for removing the old battery in reverse order.

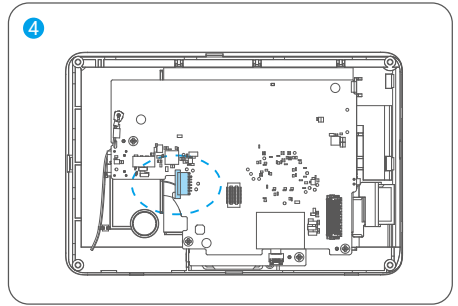
1. Remove the four screws on the back of the panel.
2. Insert a flat-head pry tool into the gap between the screen glass and the housing.



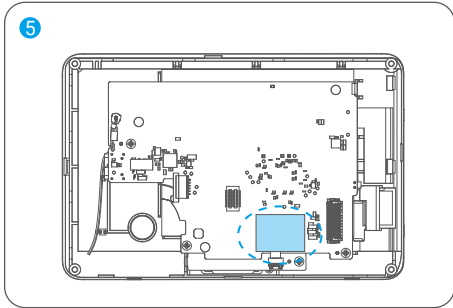
3. Press the flat-head pry tool down to lift the screen to separate the screen from the back cover.



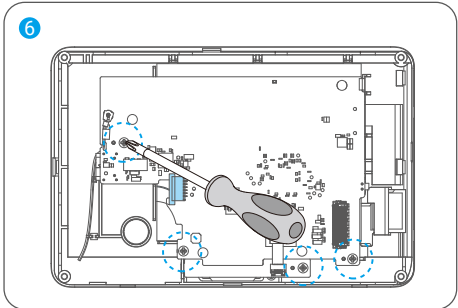
4. Disconnect the battery socket.



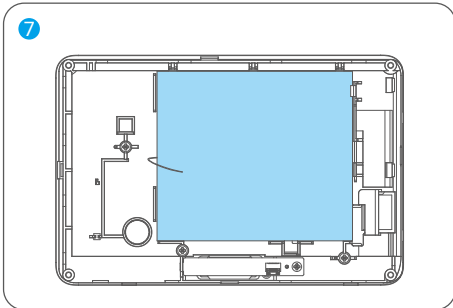
5. Peel off the acetate cloth.



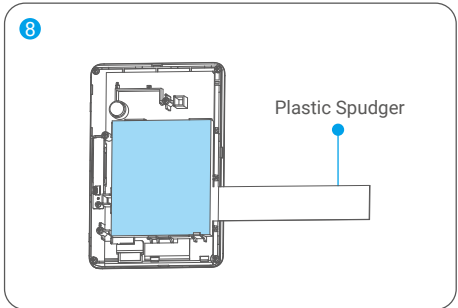
6. Use a screwdriver to remove these four screws.



7. Disconnect all connectors and remove the printed circuit board (PCB).



8. Insert a plastic spudger from the right side into the bottom of the battery and gently lift it. The battery is removed.



3. Information for Private Households

1. Separate collection of waste equipment: Electrical and electronic equipment that has become waste is referred to as waste equipment. Owners of waste equipment must dispose of it separately from unsorted municipal waste. In particular, waste equipment does not belong in household waste, but in special collection and return systems.
2. Batteries and rechargeable batteries as well as lamps: Owners of waste equipment shall, as a rule, separate waste batteries and rechargeable batteries that are not enclosed in the waste equipment, which can be removed from the waste equipment without being destroyed, from the waste equipment before handing them in at a collection point. This does not apply if waste equipment is prepared for reuse with the participation of a public waste management authority.
3. Options for returning waste equipment: Owners of waste equipment from private households can return it free of charge to the collection points of the public waste management authorities or to the take-back points set up by manufacturers or distributors within the meaning of the Electrical and Electronics Equipment Law. Stores with a sales area of at least 400 m² for electrical and electronic equipment and those grocery stores with a total sales area of at least 800 m² that offer electrical and electronic equipment several times a year or on a permanent basis and make it available in the market are required to take it back. This also applies in the case of distribution using means of distance communication, if the storage and shipping areas for electrical and electronic equipment are at least 400 m² or the total storage and shipping areas are at least 800 m². Distributors shall, in principle, ensure take-back by providing suitable return facilities at a reasonable distance from the respective end user. The possibility of returning waste equipment free of charge exists for distributors who are obliged to take it back, among other things, if a new similar device that essentially fulfills the same functions is delivered to an end user.
4. Privacy Notice: Waste equipment often contains sensitive personal data. This applies in particular to devices of information and telecommunications technology such as computers and smartphones. In your own interest, please note that each end user is responsible for deleting the data on the waste equipment to be disposed of.
5. Meaning of the symbol "crossed-out wheelee bin": The symbol of a crossed-out wheelie bin regularly depicted on electrical and electronic equipment indicates that the respective device is to be collected separately from unsorted municipal waste at the end of its service life.